


PRODUCT SHEET

Description:

Cross Dowel $\varnothing 10 \times 20 \text{mm}(10+10)$, M6, Steel, Yellow Zinc Plated

Item number:

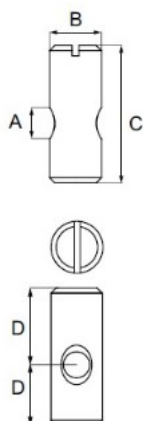
12.07.071-0

Units	Box	Carton	HS Code	Barcode
Pcs.	1	2500	7318190090	
				5704866023108



CROSS DOWELS

Material		Steel, brass or stainless steel		Stainless steel		
Type		With slot		Yellow zinc plated		
Finish		Steel, yellow zinc plated (YZP) Bright zinc plated (BZP), brass, natural Stainless steel, (SS), natural		Brass		
D* Distance from centre of hole to edge						
A	B	C	D*	Material	Finish	Item No.
M6	$\varnothing 10 \text{ mm}$	13 mm	8/5 mm	Steel	Plain	# 12.07.006
M6	$\varnothing 10 \text{ mm}$	14 mm	8/6 mm	Steel	BZP/YZP	# 12.07.030/31
M6	$\varnothing 10 \text{ mm}$	14 mm	8/6 mm	Brass	Natural	# 12.07.041
M6	$\varnothing 10 \text{ mm}$	14 mm	8/6 mm	SS	Natural	# 12.07.043
M6	$\varnothing 10 \text{ mm}$	16 mm	10/6 mm	Steel	YZP	# 12.07.044
M6	$\varnothing 10 \text{ mm}$	18 mm	12/6 mm	Steel	YZP/BZP	# 12.07.327/328
M6	$\varnothing 10 \text{ mm}$	30 mm	20/10 mm	Steel	BZP	# 12.07.350
M6	$\varnothing 10 \text{ mm}$	20 mm	10/10 mm	Steel	BZP/YZP	# 12.07.070/071
M6	$\varnothing 10 \text{ mm}$	25 mm	12,5/12,5 mm	Steel	BZP	# 12.07.110
M6	$\varnothing 10 \text{ mm}$	30 mm	15/15 mm	Steel	BZP	# 12.07.150
M6	$\varnothing 10 \text{ mm}$	40 mm	20/20 mm	Steel	BZP	# 12.07.230
M6	$\varnothing 10 \text{ mm}$	45 mm	22,5/22,5 mm	Steel	BZP	# 12.07.270
M8	$\varnothing 12 \text{ mm}$	20 mm	10/10 mm	Steel	YZP	# 12.07.287
M8	$\varnothing 12 \text{ mm}$	25 mm	12,5/12,5 mm	Steel	BZP	# 12.07.288
M8	$\varnothing 12 \text{ mm}$	30 mm	15/15 mm	Steel	YZP	# 12.07.289
M8	$\varnothing 12 \text{ mm}$	50 mm	25/25 mm	Steel	BZP/YZP	# 12.07.291/92
M8	$\varnothing 12 \text{ mm}$	60 mm	30/30 mm	Steel	BZP	# 12.07.325



SISO A/S

Mileparken 11
DK-2740 Skovlunde
Denmark
VAT: DK 24786013

Phone +45 45 830 900

www.siso.dk
siso@siso.dk

Danske Bank
Nytorv Branch
Copenhagen
SWIFT: DABADKKK

Account no.
4180 3112 112936
IBAN Account
DK7230003112112936